The background features a large, faint, yellow and blue FFA eagle logo. The eagle has its wings spread, and its chest is covered in a circular emblem with various symbols, including a plow, a sheaf of wheat, and a gear. The text is overlaid on this logo.

GUIDE TO BROOKSVILLE SR FFA

WHAT EVERY MEMBER & PARENT
NEEDS TO KNOW TO SUCCEED IN THE
FFA PROGRAM

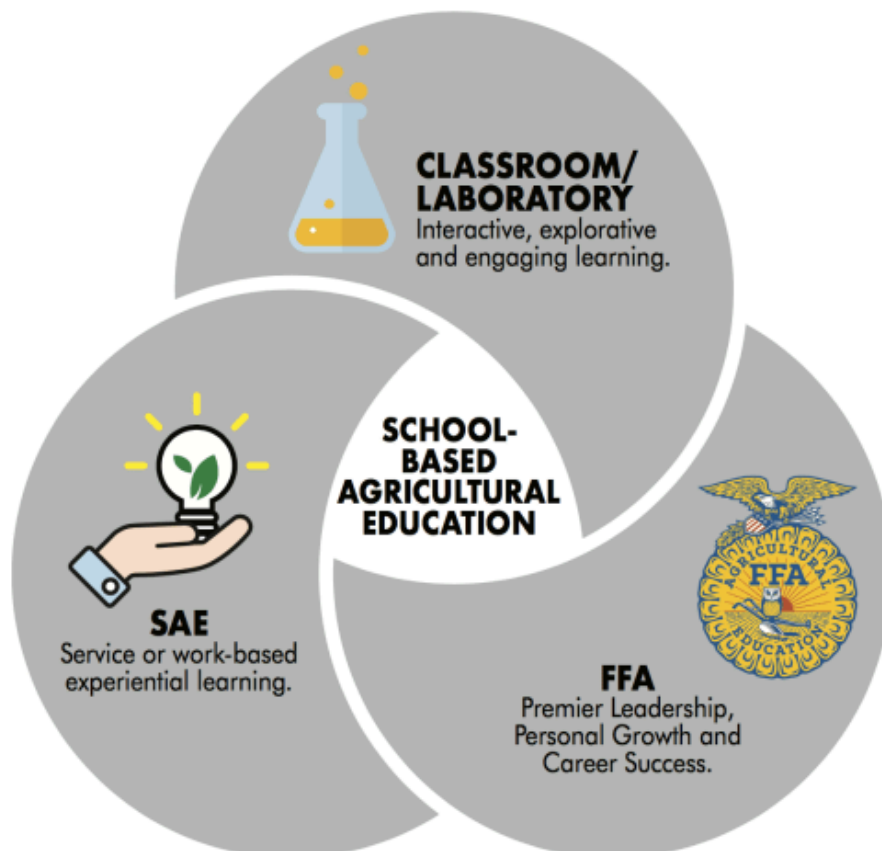
Welcome

THE FFA ORGANIZATION HAS A LOT TO OFFER YOUR CHILD. WE STRONGLY ENCOURAGE PARENTS TO KNOW WHAT IS AVAILABLE SO THAT THEY CAN HELP THEIR CHILD TAKE ADVANTAGE OF ALL THE OPPORTUNITIES FFA HAS TO OFFER. THIS SHORT GUIDE IS DESIGNED TO HELP MEMBERS AND PARENTS NAVIGATE THE FFA ORGANIZATION AT THE CHAPTER LEVEL. HOPEFULLY THIS GUIDE CAN ANSWER A FEW QUESTIONS, AND MAYBE STIMULATE SOME CONVERSATIONS.

THE AGRICULTURE EDUCATION COURSES CONSIST OF THREE SEGMENTS:

- CLASSROOM INSTRUCTION
- SUPERVISED AGRICULTURE EXPERIENCE
- FFA

AS A STUDENT ENROLLED IN AN AG EDUCATION CLASS AT HHS THEY ARE AUTOMATICALLY ENROLLED IN THE FFA.



Welcome

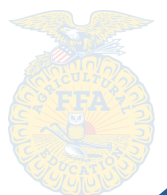
THE SUPERVISED AGRICULTURAL EXPERIENCE (SAE)

A SUPERVISED AGRICULTURAL EXPERIENCE PROGRAM (SAE) IS A KEY COMPONENT OF AGRICULTURAL EDUCATION. STUDENTS LEARN TO APPLY THE CONCEPTS AND PRINCIPLES TAUGHT IN THEIR AGRICULTURE CLASSES TO REAL-WORLD PROBLEMS AND SCENARIOS. A STUDENT SELECTS AN SAE PROJECT BASED ON HIS OR HER INTEREST IN ONE OF FOUR AREAS:

- EXPLORATORY - LEARN ABOUT THE BIG PICTURE OF AGRICULTURE AND ITS MANY RELATED CAREERS.
- RESEARCH/EXPERIMENTATION AND ANALYSIS - CONDUCT RESEARCH AND ANALYZE INFORMATION TO DISCOVER NEW KNOWLEDGE.
- OWNERSHIP/ENTREPRENEURSHIP - PLAN AND OPERATE AN AGRICULTURE-RELATED BUSINESS.
- PLACEMENT/WORK EXPERIENCE - WORK FOR A BUSINESS OR INDIVIDUAL, EITHER FOR PAY OR FOR THE EXPERIENCE.

STUDENTS WILL BE GIVEN TIME IN CLASS TO WORK ON THEIR PROJECTS BUT WILL BE REQUIRED TO WORK ON THEM OUTSIDE OF CLASS AS WELL.

SAE'S ARE A YEAR LONG PROJECT THAT CAN BE BUILT OFF OF IN CONSECUTIVE YEARS TO FOLLOW.



Brooksville Sr FFA Guide

FLORIDA STATE FAIR

Drinks and Snacks

During the fair many of our exhibitors stay at the facilities all day. We try to make sure there are snacks and drinks available for the duration of the event. Leading up to the fair we are asking that exhibitors parents please communicate to supply snacks, drinks, lunches for exhibitors. Food will be stored on site at our FFA Stalls or Trailer for our exhibitors.

Snacks/Water can be dropped off at the AG Room by February 2nd to get loaded on the exhibitor trailer.

Dates

February 5th
to
February 16th 2026

Record Books

All record books (except market animals) are due to the fair in advanced. Follow your species Rule book for all deadlines and requirements.

Categories

Animals: Poultry, Waterfowl, Rabbits, Cavies, Swine, Steer, , Beef and Dairy, Goat, Lamb, Alpaca/Llama, Dog

Other: Aquarium Design, Ag Mechanics, Barn Quilt, Baking, Photography, Horticulture, and more!



- FFA Jacket
- White Collard button-up shirt
- FFA Scarf/Tie
- Black Bootcut Jeans
- Brown/Black Boots

Official Dress

Questions?

Ask Ms. Nelson on Parent Square or email:
nelson_t@hcsb.k12.fl.us

Welcome

CAREER OR LEADERSHIP DEVELOPMENT EVENTS (CDE OR LDE)

FOR STUDENTS WHO ASK THEIR TEACHERS "WHEN WILL I EVER USE THIS IN THE REAL WORLD?" CAREER DEVELOPMENT EVENTS (CDES) AND LEADERSHIP DEVELOPMENT EVENTS (LDES) ARE THE ANSWER.

MEMBERS CAN PARTICIPATE IN:

- CREED SPEAKING
- PREPARED PUBLIC SPEAKING
- EXTEMPORANEOUS PUBLIC SPEAKING
- FLORICULTURE
- AG ISSUES
- PARLIMEBTARY PROCEDURES
- HORSE JUDGING
- LIVESTOCK JUDGING
- MEAT JUDGING
- OH DEMONSTRATIONS
- AND MANY MORE!



Welcome

WHAT IS FFA?

FFA IS A DYNAMIC YOUTH ORGANIZATION WITHIN AGRICULTURAL EDUCATION THAT PREPARES STUDENTS FOR PREMIER LEADERSHIP, PERSONAL GROWTH, AND CAREER SUCCESS. FFA WAS CREATED IN 1928 AS THE FUTURE FARMERS OF AMERICA; HOWEVER, THAT NAME WAS CHANGED TO THE NATIONAL FFA ORGANIZATION IN 1988 TO REFLECT THE GROWING DIVERSITY OF AGRICULTURE. TODAY, MORE THAN 700,000 STUDENT MEMBERS ARE ENGAGED IN A WIDE RANGE OF AGRICULTURAL EDUCATION ACTIVITIES, LEADING OVER 300 CAREER OPPORTUNITIES IN THE AGRICULTURAL SCIENCE, FOOD, FIBER AND NATURAL RESOURCES INDUSTRY. STUDENT SUCCESS STILL REMAINS THE PRIMARY MISSION OF THE FFA.



Welcome

WHAT CAN YOU DO TO ENSURE STUDENT SUCCESS IN THE BROOKSVILLE SR FFA & AG PROGRAM?

- VOLUNTEER AT EVENTS AND AFTERSCHOOL
- WORK WITH STUDENTS/ PARENTS/ADVISOR TO START AN SAE
 - THE SUPERVISED AGRICULTURAL EXPERIENCE (SAE) PROGRAM INVOLVES PRACTICAL AGRICULTURAL ACTIVITIES PERFORMED BY STUDENTS OUTSIDE OF SCHEDULED CLASSROOM AND LABORATORY TIME. THIS COULD BE A PROJECT LIKE RAISING ANIMALS OR WORKING FOR A LOCAL BUSINESS.
- COMMUNICATE WITH THE AGRICULTURE TEACHER ABOUT ANY CONCERNS OR QUESTIONS YOU MAY HAVE.
- KEEP FFA EVENTS ON YOUR FAMILY CALENDAR.
- ENCOURAGE YOUR CHILD TO ATTEND FFA ACTIVITIES AND MONTHLY MEETINGS.
- PARENTS ARE ALSO ENCOURAGED TO ATTEND FFA ACTIVITIES.
- ENCOURAGE YOUR CHILD TO COMPETE. NO EXPERIENCE NECESSARY.
- RETURN ALL PERMISSION SLIPS SO YOUR CHILD CAN ATTEND FIELD TRIPS.
- JOIN THE BROOKSVILLE SR FFA PARENT BAND TO COMMUNICATE AND COORDINATE WITH OTHER PARENTS!
- GET PLUGGED IN ON FACEBOOK , THEAET.COM, AND BSFFA.THEAET.COM TO STAY UP TO DATE ON ACTIVITIES.





MEETING



FFA CHAPTER MEETINGS

***THIS IS A TENTATIVE SCHEDULE OF ALL FFA MEETING FOR THE YEAR.
MEETINGS ARE SUBJECT TO CHANGE AND MAY OCCASIONALLY BE CANCELED.***

***ALL MEETINGS WILL BE AFTERSCHOOL TILL 5:00PM
IN THE AG DEPARTMENT UNLESS OTHERWISE NOTED.***

SEPTEMBER 4TH (SEMINAR 6:00-8:00PM)

OCTOBER 8TH

NOVEMBER 12TH (FRIENDSGIVING)

DECEMBER 10TH

JANUARY 14TH

FEBRUARY 20TH (MOVIE NIGHT 6:30-9:00PM)

MARCH 11TH

MAY 2ND (AWARDS NIGHT)



Welcome

DEGREES

Students can earn degrees each year they are enrolled in an agriculture course. They must achieve specific requirements to earn each degree.

Greenhand Degree - The first milestone in FFA. This degree honors new members who have shown dedication to learning about agriculture, the FFA Creed, and our organization's history. Applications are sent out to members in March and are due by April 1st.

Chapter Degree - The Chapter degree is the second degree you can earn in high school. These Recipients have continued their involvement in FFA over the last year, whether it be through their SAE projects, Fundraising, Community service, leadership development and more. Members must complete their applications by April 1st.

State Degree- The State FFA Degree is a significant honor awarded to dedicated members of the Future Farmers of America (FFA) who have shown exceptional commitment to agricultural education and leadership. To earn this degree, members must first obtain the Chapter FFA Degree and be active in FFA for at least two years. They need to complete 360 hours of agricultural education, participate in a supervised agricultural experience (SAE), and demonstrate leadership through activities like public speaking and community service. Due by March 1st on AET.

American Degree- This prestigious honor is earned by less than half of 1% of FFA Members. It demonstrates the effort FFA members apply toward their supervised agricultural experience and the outstanding leadership abilities and community involvement they exhibited through their FFA career. American FFA Degree recipients show promise for the future and have gone above and beyond to achieve excellence. American Degree candidates must complete their application 1-2 years post graduation. Applications are due by March 1st on AET



FFA OFFICIAL DRESS (OD)

AS FFA MEMBERS, WE HAVE THE OPPORTUNITY TO IMPACT MANY PEOPLE WHO MAY OR MAY NOT BE FAMILIAR WITH THE ORGANIZATION: COMMUNITY RESIDENTS, BUSINESSMEN AND WOMEN, FFA SPONSORS, GUESTS, PARENTS, ETC. THEREFORE, FIRST IMPRESSIONS ARE CRUCIAL, AND THAT INVOLVES THE WAY WE DRESS. ALL FFA MEMBERS ARE REQUIRED TO WEAR OFFICIAL DRESS WHILE PARTICIPATING IN OFFICIAL ACTIVITIES.

OFFICIAL DRESS INCLUDES:

- BLACK PANTS OR SKIRT (LADIES)
 - SKIRT IS TO BE AT LEAST KNEE LENGTH, HEMMED EVENLY ACROSS THE BOTTOM.
 - SKIRTS ARE REQUIRED AT ALL INDOOR ACTIVITIES AND CONTEST. PANTS ARE REQUIRED AT OUTDOOR ACTIVITIES AND CONTEST.
- BLACK SLACKS (GENTLEMAN)
- WHITE COLLARED DRESS SHIRT/BLOUSE
- OFFICIAL FFA BLUE SCARF OR TIE
- BLACK DRESS SHOES WITH A CLOSED HEEL AND TOE
 - DEPENDING ON THE EVENT BOOTS MAY OR MAY NOT BE RECOMMENDED
- BLACK NYLON HOSIERY AND/OR BLACK SOCKS
- OFFICIAL FFA JACKET ZIPPED TO THE TOP



WHERE TO PURCHASE?

YOUR CHILD CAN CHECK OUT A MAJORITY OF THESE ITEMS FROM THE AGRICULTURE DEPARTMENT IF NEEDED FOR A ONE TO TWO TIME USE. STUDENTS WILL BE CHARGED FOR LOST OR STOLEN ITEMS BELONGING TO FOWLER FFA.

YOU CAN ALSO PURCHASE THESE ITEMS ON AMAZON, WALMART, JC PENNY OR ANY DEPARTMENT STORE IN THE MENS OR WOMENS SECTION.

VISIT WWW.SHOPFFA.ORG/PRODUCTS TO ORDER FFA JACKETS AND TIE. (SEE NEXT PAGE FOR DETAILS)

Welcome



LINKS AND WEBSITES

BROOKSVILLE SR FFA WEBSITE
[HTTP://BSFFA.THEAET.COM](http://BSFFA.THEAET.COM)

FACEBOOK @BROOKSVILLE SR FFA

FFA MANUAL
FFA.ORG/OFFICIAL-MANUAL/

FLORIDA FFA - [HTTPS://FLAFFA.ORG](https://FLAFFA.ORG)

NATIONAL FFA - [HTTPS://WWW.FFA.ORG](https://WWW.FFA.ORG)

SHOP FFA - [HTTPS://SHOPFFA.ORG/PRODUCTS](https://SHOPFFA.ORG/PRODUCTS)

FLORIDA STATE FAIR -
[HTTPS://FLORIDASTATEFAIR.COM/AG/](https://FLORIDASTATEFAIR.COM/AG/)

**JOIN PARENT/STUDENT SQUARE FOR REMINDERS AND
ANNOUNCEMENTS**

CONTACT INFORMATION

TAYLOR NELSON - NELSON_T@HCSB.K12.FL.US

BROOKSVILLE SR FFA ADVISOR

AGRICULTURE & VETERINARY ASSISTING INSTRUCTOR



AGRICULTURE STUDENT LINGO

TERMS YOU MAY HEAR AGRICULTURE STUDENTS USE

CDE (CAREER DEVELOPMENT EVENTS) – FFA/AGRICULTURE SKILL COMPETITIONS

LDE (LEADERSHIP DEVELOPMENT EVENTS) - FFA/AGRICULTURE SPEAKING COMPETITIONS

CREED – THE FFA CREED IS A 5 PARAGRAPH DOCUMENT TAUGHT TO ALL MEMBERS.

DEGREES – AWARD RECOGNIZE STUDENT PROGRESS AND SUCCESS IN LEADERSHIP, AG EDUCATION AND THEIR SAE.

PROFICIENCY - AWARD RECOGNITION FOR STUDENTS WITH AN OUTSTANDING SAE PROJECT.

SUB-DISTRICT – EACH DISTRICT IS BROKEN INTO SMALLER GROUPS CALLED SUB-DISTRICTS.

DISTRICT - FLORIDA FFA IS DIVIDED INTO 12 DISTRICTS, THIS IS A LARGER GROUP OF CHAPTERS THAT WE WILL COMPETE AGAINST AT THE DISTRICT CONTEST.

AREA- FLORIDA FFA IS DIVIDED INTO 6 AREAS, BSFFA IS IN AREA 3. EACH AREA HAS A STATE OFFICER THAT REPRESENTS THAT AREA. FLORIDA FFA ALSO HAS A PRESIDENT AND SECRETARY THAT REPRESENT ALL OF THE 6 AREAS.

FFA MOTTO – LEARNING TO DO, DOING TO LEARN, EARNING TO LIVE, LIVING TO SERVE

FFA MISSION – PREMIER LEADERSHIP, PERSONAL GROWTH, AND CAREER SUCCESS

SAE- (SUPERVISED AGRICULTURAL EXPERIENCE) – INDIVIDUAL EXPERIENTIAL LEARNING THAT TAKES PLACE OUTSIDE OF THE CLASSROOM AND IS AGRICULTURE BASED.

